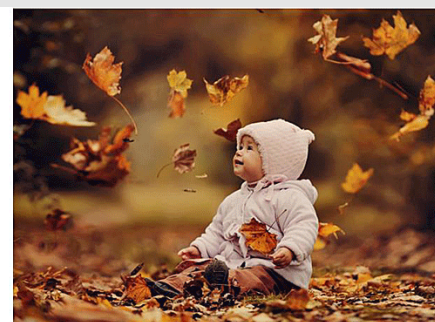


[Click here to see this online](#)

EITP

EARLY INTERVENTION TRAINING PROGRAM

Fall 2015 Newsletter



News and Updates

Measuring Child Outcomes: Tools for Success

[Child Outcomes](#) can best be described as the benefits experienced as a result of the services and supports provided to a child and family. The [Office of Special Education Programs](#) (OSEP) has identified 3 Child Outcomes expected as a result of participating in early intervention:

- 1) positive social-emotional skills,
- 2) acquisition and use of knowledge and skills, and
- 3) use of appropriate action to meet needs.

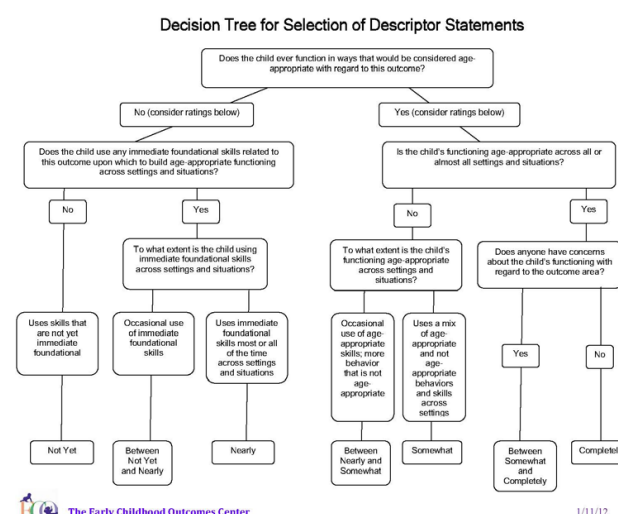
Measuring [child outcomes](#) is one way for families, early interventionists, and programs to know if a child is progressing and if the intervention strategies are effective in supporting the child's everyday functional skills across a variety of settings. This process provides a consistent way for teams to identify progress relative to age-expected behavior.

Many teams have described the difficulty with determining how to represent the child's performance across the three child outcomes. Fortunately, there is a tool called the [decision tree](#) that can support teams in making determinations of each child's status and progress and can improve the consistency of the ratings across IFSP teams.

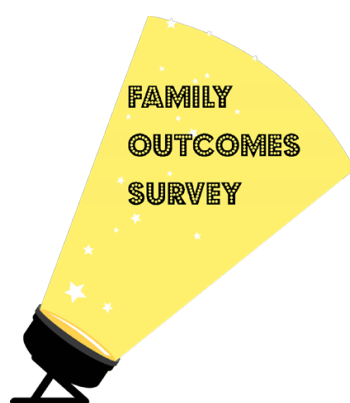
The [decision tree](#) is easy to use- it's simply a series of questions about the extent to which a child exhibits age-appropriate skills and behaviors in each outcome area. Responses guide the user to a specific rating category on the scale. The team compares each child's developmental status to age expectations on a scale that ranges from "Not Yet" to "Completely." Teams can use the decision tree to guide the rating process.

The Decision Tree PDF can be downloaded and printed by clicking on the following link: http://ectacenter.org/eco/assets/pdfs/Decision_Treeonnumbers.pdf

Source: *Outcomes Measurement: Child Outcomes Summary Process* (ECTACenter.org: The Early Childhood Technical Assistance Center: Improving Systems, Practices and Outcomes for Young Children with Disabilities and their Families) <http://ectacenter.org/eco/pages/outcomes.asp>



ECTA Center ECO Decision Tree



Family Outcomes Surveys will be going out soon!

The [Early Intervention Training Program \(EITP\)](#) will soon be sending [Family Outcomes Surveys](#) to the parents of children who have exited early intervention services between Feb 2015-June 2015!

What you can do!

To help improve return rates, we need your help! Families trust providers and service coordinators so we ask that you let families know that an important survey will be mailed to their homes after they exit the EI system.

- You should tell them about the importance of their feedback to help the EI system deliver better services to current and future infants, toddlers and their families.
- Please encourage families to complete and return the surveys, and let them know that they can [contact EITP](#) with any questions or for assistance in completing the survey. Spanish speaking staff is available to work with families.

- By continuing to expand the number of families completing and returning surveys, we should soon be able to better understand the benefits of early intervention for both children and their families.

To learn more about Child Outcomes, please visit our EITP Resource page at <https://illinois.edu/blog/view/6039/114618>

Assessment Institute



Registration Open for the EITP Assessment Institute

Build your skills in obtaining assessment information that is an accurate representation of a child's true abilities! Whether determining eligibility, designing a new IFSP, or collecting ongoing assessment information about a child's progress over time, this linked series informs and supports evidence based recommended practices to enhance your knowledge of developmentally appropriate assessment practices in your work in EI, while considering the roadblocks and challenges you face!

The Institute will be held over 4 days : 10/9, 10/26, 11/19, and 12/8. Attendance is required for all days to receive the following credit:

- 20.0 EI credential hours in Assessment
- 5.0 EI credential hours in Typical Development

25.0 hours of State continuing educational (CE) credit

EITP Assessment Institute

To register, please visit <http://illinoiseittraining.org/page.aspx?module=15&type=1&item=1&eventid=14059>

New Early Learning Site

The U.S. Department of Education recently launched a new [Early Learning](#) site. The goal for the new site is to help improve the health, social-emotional, and cognitive outcomes for all young children, particularly those with high needs. There are many resources to support your work with families, but we thought we would highlight these great tip sheets – they are all in English and Spanish!

The U.S. Departments Education and Health and Human Services, in partnership with [Too Small to Fail](#), have created the "[Talk, Read, and Sing Together Every Day](#)" tip sheets. Made specifically for families, caregivers and early interventionists, these resources can help enrich a child's early language experiences by providing research-based tips for talking, reading, and singing with young children every day beginning from birth.



Early Learning site: Talk, Read, Sing

Check them out and see if there are any you would like to share with your families:

<http://www2.ed.gov/about/inits/ed/earlylearning/talk-read-sing/index.html>

Resources around Language

We're sorry: video playback cannot be initialized on your browser at this time. [Load this talk on ted.com](#)

TED Talk on Linguistic Genuis of Babies

[Patricia Kuhl](#) shares astonishing findings about how babies learn one language over another — by listening to the humans around them and "taking statistics" on the sounds they need to know. Clever lab experiments (and brain scans) show how 6-month-old babies use sophisticated reasoning to understand their world. In fact, this video has been viewed over a million times! To view video or learn more, please visit https://www.ted.com/talks/patricia_kuhl_the_linguistic_genius_of_babies

5 Tips for Baby Conversations

Conversation is key to language development! Thankfully, the [Urban Child Institute](#) has put together 5 easy tips around conversations with babies and toddlers!

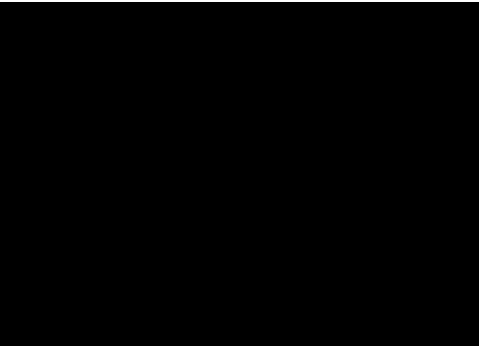


Visit the following link to learn more, or to share on social media with families or colleagues too:
http://www.urbanchildinstitute.org/articles/features/5-tips-for-baby-conversations?utm_source=newsletter&utm_medium=email&utm_campaign=uci_promo

Practice Guide for Families: Gestures and Signs

Is your child making eye contact, pointing to objects, babbling, or smiling to try to tell you something? Teaching your child simple gestures and signs can make it easier for her to communicate. It can help her make the connection between communicating what's on her mind and getting what she wants. The following video and accompanying PDF ([Gestures and Signs](#)) can help families better communicate with their child!

Source: <http://ectacenter.org/decrp/type-pgfamily.asp>



Resources You Can Use



Additional Practice Guides for Families That Support Interactions

[ECTA Center](#) has posted [Practice Guides](#) for practitioners to share with families around Interaction! The Practice Guides are formatted for print as well as for viewing on mobile devices, and include great videos!

The "Gestures and Signs" Practice Guide is one example of what is available at <http://ectacenter.org/decrp/type-pgfamily.asp>



Tips for Supporting Depressed Mothers

New mothers are vulnerable to depression, which can cause isolation and a strong sense of being overwhelmed. As an EI provider, you may one of the few people who maybe able to help her!

This resource is useful, because it provides tips and tools for working with mothers who may be depressed (see page 5-11 in particular).

To download the PDF guide, please visit <http://store.samhsa.gov/shin/content/SMA14-4878/SMA14-4878.pdf>

EITP Online Trainings

New EITP Online Training Page

Finding the EITP online trainings just got easier! We created a new site that has a listing of our current online training offerings.

The site also has a guide for new users called the "online road map" and a link to our FAQ page about online trainings.

Please bookmark our new online training event site:



<http://go.illinois.edu/EITPonline>

But How Do I Get Into Moodle?

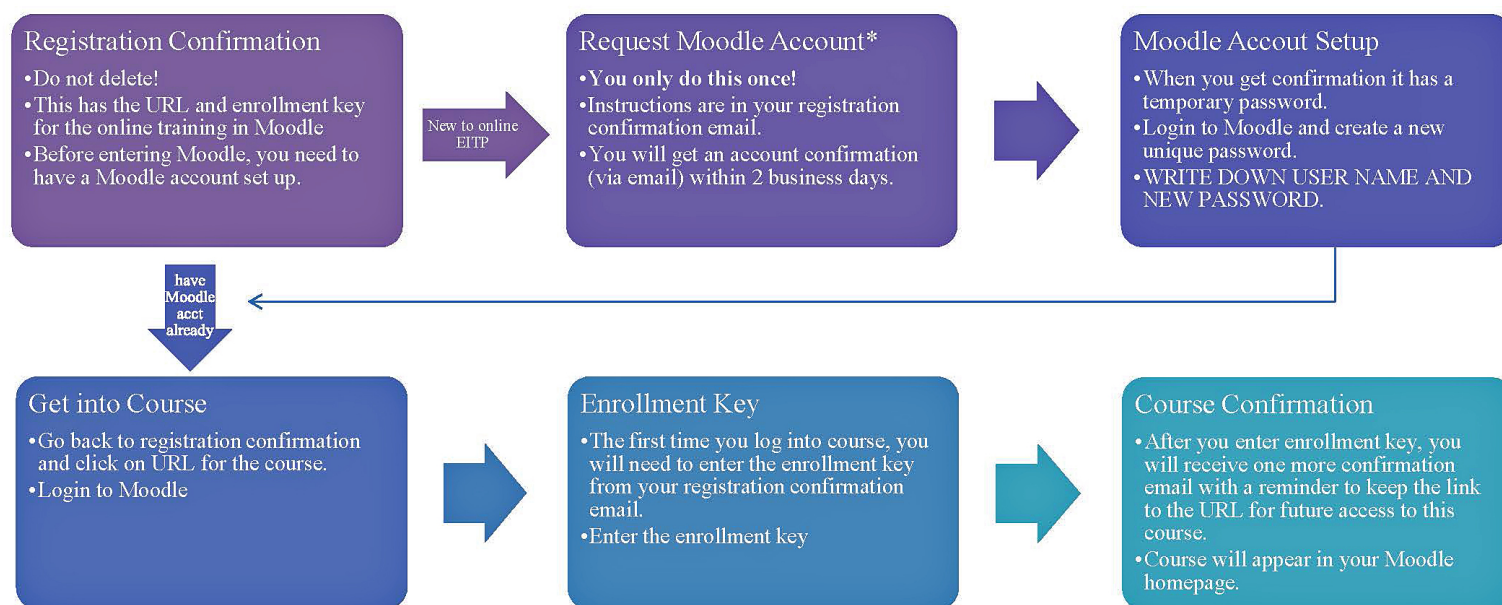
We all know the Moodle registration process can be a little difficult to navigate. **Fortunately, you have a road map!!**

EITP has outlined the steps involved in Moodle registration! It can be found on the EITP Online Event page at <http://go.illinois.edu/EITPonline>

The following road map can which can be downloaded as a PDF at <https://illinois.edu/blog/files/6039/140057/71802.pdf>

Online Learning Road Map

Steps needed to access Moodle and Course online



*** Your Moodle account will be used for all online learning.**

*** Save your user name and passwords - you will need it for future EITP online trainings.**

*** For additional help email onlinelearning@illinoiseittraining.org**

Upcoming Events



To view a full list of events, including events not sponsored by EITP, visit our website by [clicking here](#). Please note that schedule is subject to change and availability.

To view upcoming events sponsored by EITP please visit <http://go.illinois.edu/EITPevents>

EITP Sponsored Events

Click on the title of the event to register!

Date	Event and Registration Link	Location
9/18/2015	"Baby Steps and Building Block" - Infant/Toddler Development Institute - Day 1 (Institute requires 4 days of attendance - 9/18, 10/2, 10/15 and 10/27)	Grayslake
9/21/2015	Authentic Assessment in Early Intervention	Springfield
9/21/2015	System Overview for Bilingual Interpreters and Translators in Illinois Early Intervention (Training requires 3 days of attendance - 9/21-9/23)	Chicago Heights
9/23/2015	Online Systems Overview One-Day Follow-Up	O'Fallon
9/25/2015	The Art of Assessment for Assistive Technology in Illinois Early Intervention	Mt. Vernon
October		
10/7/2015	Building Bridges: The Transition Process from Early Intervention to Early Childhood	Arlington Heights
10/9/2015	Infant/Toddler Assessment Institute - "Developmentally Appropriate Practices" - Day 1 (Institute requires 4 days of attendance - 10/9, 10/26, 11/19, and 12/8)	Springfield
10/14/2015	Online Systems Overview One-Day Follow-Up	Springfield
10/15/2015	Building Bridges: The Transition Process from EI to ECSE Services	Alton
10/22/2015	Beyond Mandated Reporting: Building Resiliency with Families	Live Webinar
10/22/2015	Online Systems Overview One-Day Follow-Up	Chicago (Erikson Institute)
10/23/2015	Building Bridges: The Transition Process From Early Intervention To Early Childhood	Oak Forest
10/23/2015	The Modern Family (Event requires 2 days - 10/23 and 11/5)	Champaign
10/29/2015	Building Bridges: The Transition Process from Early Intervention to Early Childhood	Moline
10/29/2015	What's on the Web? Family Violence Resource Toolkit	Live Webinar
November		
11/3/2015	Building Bridges: The Transition Process from Early Intervention to Early Childhood	Springfield
11/4/2015	Easy Adaptations in Everyday Activities and Settings	Naperville
11/6/2015	Partnering for Success: Foundational Institute (Event requires 4 days: 11/6, 11/19, 12/2, and 12/15)	Naperville
11/9/2015	Measuring the Success of Early Intervention	Champaign
11/9/2015	Making the Connection: Using the Evaluation & Assessment Process to Guide Functional Outcome Planning with Families	Champaign
11/12/2015	Social Emotional Development in the Early Years: Creating Supportive and Inclusive Environments	Live Webinar

11/13/2015	Online Systems Overview One-Day Follow-Up	Mt. Vernon
11/18/2015	Online Systems Overview One-Day Follow-Up	Naperville
December		
12/3/2015	Social Emotional Development in the Early Years: Enriching Social Emotional Literacy	Live Webinar

Conferences

Don't miss these upcoming conferences! Many conference sessions include Illinois Early Intervention credit!

- 2015 Division of Early Childhood (DEC) Conference held Oct. 7-9, 2015 in Atlanta, GA To register: <http://www.dec-sped.org/conference>

READ MORE ABOUT



Central Billing Office | Monitoring| EI Central Directory

The Early Intervention Training Program is housed within the Department of Special Education at the University of Illinois at Urbana-Champaign and funded through the Illinois Department of Human Services.

Disclaimer

The information provided in this Newsletter is not intended to take the place of either the written law or regulations. The opinions, resources, and links provided on the Web site are intended for information purposes only and are not intended to take the place of medical or legal advice, or of other appropriate services.

The content of the EITP Newsletter does not necessarily reflect the views or policies of the Illinois Early Intervention Training Program, the University of Illinois at Urbana-Champaign, or the Illinois Department of Human Services; nor does the mention of trade names, commercial products, or organizations imply endorsement by the Illinois Early Intervention Training Program, the University of Illinois at Urbana-Champaign, or the Illinois Department of Human Services.

[Subscribe](#) [Unsubscribe](#)