

[Click here to see this online](#)

EITP

EARLY INTERVENTION
TRAINING PROGRAM

ANNOUNCEMENTS

Maximizing Live Video Visits

Written by Crystal Williams, Doctoral Student (UIUC Special Education)

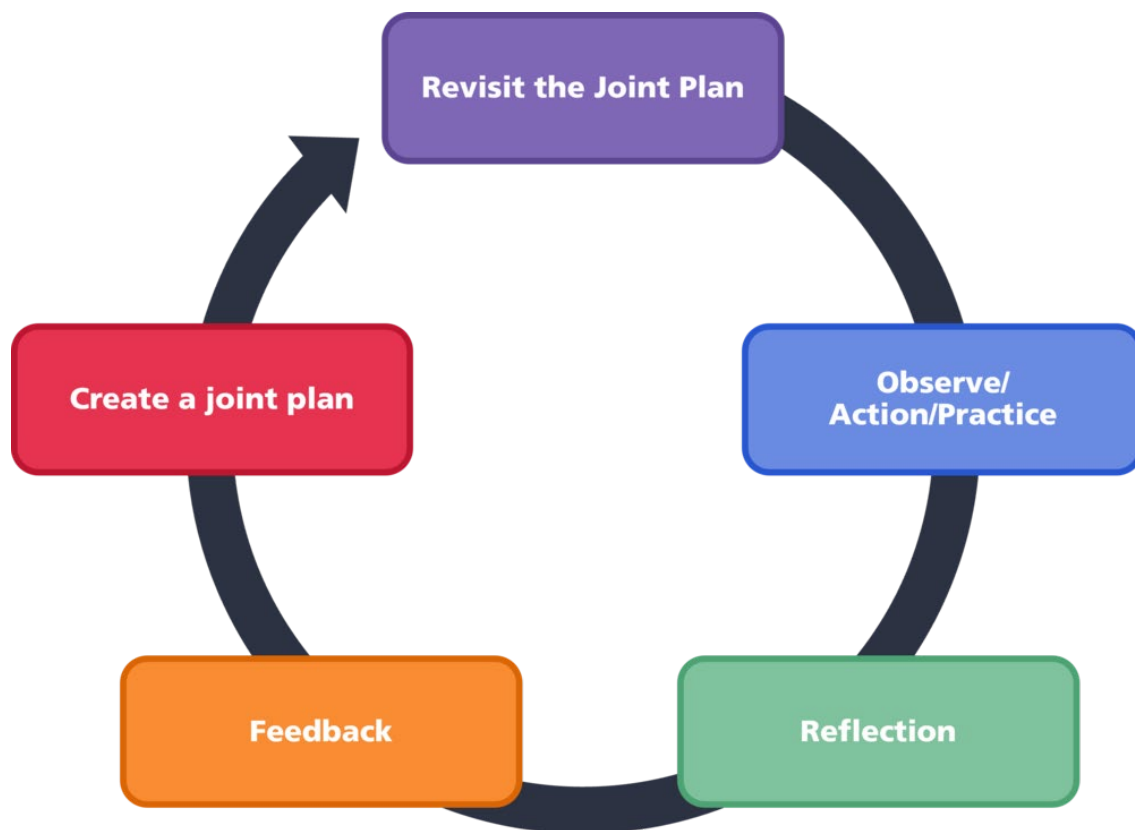
Edited and Designed by Alissa Jones, M.A., M.Ed.

You may have seen in our [last newsletter](#) what we learned about live video visits (LVV) in Illinois from EI personnel in the [Results of the 2021 EI Expertise and Needs Assessment - Live Video Visits](#) (pdf). To extend upon what we learned from the results, this announcement will provide practical strategies and resources that early interventionists can use to support their practices and their LVV.

Tips for Enhancing EI Visits

Families and early interventionists each have expertise that can be used to enhance EI visits. A coaching model allows early interventionists and family members to work together toward common goals for the child and their family. Coaching sessions, whether implemented in person or via LVV, are most successful when they follow a predictable cycle (shown below).

Click on the image to open an interaction revealing more about these practices!



Interaction based on Coaching Cycle from Rush & Sheldon (2020)

For ideas about coaching via Live Video Visit, check out [10 Strategies for Engaging Parents \(not Children?\) during Tele-Intervention](#) or [Partnering with Families during Live Video Visits \(Telehealth\) resource](#) (pdf) for strategies to support implementing and modifying intervention strategies during visits.

Consider families' and your own developmental expectations for children during LVVs. Infants and toddlers should not be expected to sit and engage with early interventionists through the screen for the whole session. Ideas to try instead may include the following:

1. Focus intervention sessions around routines such as meals, dressing, or getting ready for nap. Observe the family, encourage caregiver reflection about what's working/not working, and offer suggestions for improving the routine
2. Remember the child doesn't have to continually engage for a session to be meaningful. Start the session with a planned parent-child interaction and then allow the child to play while you and the caregiver reflect. You can use [the "Joint Planning in Preparation for Live Video EI Visits" form](#) to create joint plans with the family.
3. Alter activities throughout the session as you would in person. Consider child-led activities, motivational activities, new skills to introduce, and sensory/movement breaks.
4. Embed pre-academic skills in everyday learning opportunities. For example, encourage the family to look for the shapes around their home, sort laundry by color, or talk about letters while making a grocery list.
5. Emphasize movement, music, and pretend play. Use screen share sparingly to play short songs and

videos. Sing songs, do fingerplays, and use puppets.

6. Introduce children to “show and tell” by showing them something of yours through the video and then asking them to find something to show.
7. Try to limit the family’s stress about moving their device to keep the child in view. Encourage the family to step away from the camera as needed.

Resources to Support Families

- [Videos to share with families about Live Video Visits](#) - Watch other families talk about their experience. Topics include how virtual visits work, managing anxiety about virtual visits, the benefits of virtual visits, and ideas for making the most of provider expertise.
- [Everyday Early Intervention Resources](#) - Check out these tip sheets, videos, and resource guides about live video visits that can be shared with families. There are also tip sheets on helping children learn in their natural environment.
- [Materials Request & Contact Form](#) - EI providers and families can submit this form to request materials or more information. Materials such as tip sheets, books, journal articles, and videos can be requested.
- [Technology Loan Form](#) - The Illinois Early Intervention Clearinghouse loans technology to help families in early intervention participate in live video visits, or telehealth.
- [Providing Distance Family Support](#) -This webinar offers ideas for supporting families of children without adding extra stress.

Technology Resources

- [Device Loan Request](#) - Early intervention families may request a device and/or data to use for Live Video Visits. EI providers may submit the form on behalf of families.
- [Videoconferencing 101](#) - You can find tips for getting started with videoconferencing, home visiting resources, and Zoom support links.
- [Family Technology Checklist for Live Video EI Visits](#) (pdf) - a checklist for families new to LVV
- [Professional Technology Checklist for Live Video EI Visits](#) (pdf) - a checklist for early interventionists facilitating LVV

General Resources

- [A Co-Visit with Bowen’s Family](#) - In this video, you will hear about the experience of two providers using coordinated services and co-treating to support a family.
- [Early Intervention Community of Practice](#) - Consider joining a community of practice where you can discuss challenges and gain new ideas from other professionals about supporting families
- [ECHO Autism](#) - Consider joining an ECHO, where you can learn with other professionals about how to support children with Autism. Select Early Years to join an early intervention group or choose another topic of interest.
- [Coaching videos](#) - Watch these full-length home visit sessions. In-person and virtual visit examples are provided.

- [Tips and Techniques for Effective Coaching Interactions](#) - a brief article containing strategies, tips, and techniques to support a coaching style of interaction in early intervention.
- Selected Infographics from [FIPP's Tele-Intervention](#) page can inform your practice:
 - [EI Guide to Tele-Coaching](#) (pdf)
 - [Tele-Coaching Alternatives to Modeling](#) (pdf)
 - [The Power of Capacity Building](#) (pdf)

Reference

Rush, D. & Shelden, M. (2020) *The Early Childhood Coaching Handbook*. (2nd ed.) Paul H. Brookes Publishing Co.

LEARN MORE ABOUT



[Central Billing Office](#) | [Monitoring](#) | [EI Central Directory](#)

EITP is housed within the **Department of Special Education** at the **University of Illinois at Urbana-Champaign** and funded through the **Illinois Department of Human Services**. Please review [UI Web Privacy Notice](#).

Disclaimer

The information provided in this Announcement is not intended to take the place of either the written law or regulations. The opinions, resources, and links provided in the Announcement are intended for information purposes only and are not intended to take the place of medical or legal advice, or of other appropriate services. The content of the EITP Announcement does not necessarily reflect the views or policies of the Illinois Early Intervention Training Program, the University of Illinois at Urbana-Champaign, or the Illinois Department of Human Services; nor does the mention of trade names, commercial products, or

organizations imply endorsement by the Illinois Early Intervention Training Program, the University of Illinois at Urbana-Champaign, or the Illinois Department of Human Services.

[Subscribe](#)