

Summer Research Opportunities

A Summer of Research, A Lifetime of Memories

Live and work alongside university faculty in an inspirational setting in the northern Shenandoah Valley near Winchester, Virginia.

History and science converge at Blandy, with more than 700 acres of forests, fields, and the State Arboretum of Virginia. Facilities include a new laboratory, new greenhouse, a library, kitchen, wireless internet, and dormitory accommodations.

Opportunities for study include independent or supervised research, and involvement in environmental education and outreach programs.



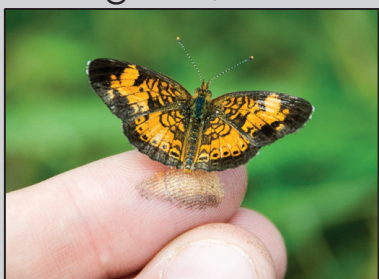
University of Virginia's Historic BLANDY EXPERIMENTAL FARM

Ecological Research Station

"Even though it was just a short while, it was still a life-changing experience." - 2008 Student

Research Fellowships Research Experience for Undergraduates (REU)

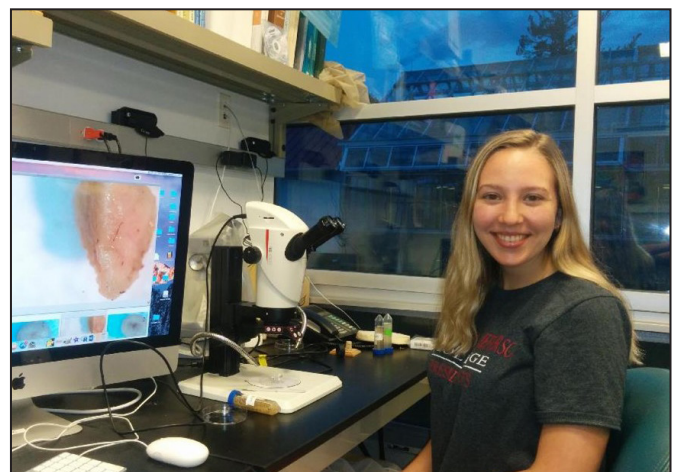
The National Science Foundation supports a Research Experience for Undergraduates (REU) program at Blandy. This nationally recognized program enables students from around the country to participate in faculty-mentored research in ecology and evolution. The program will be held May 23-August 5, 2022.



Students receive free housing, a stipend (\$575/week), and funds to purchase groceries. Projects may involve educational outreach. Fellowships are available each year, awarded on a competitive basis.

Graduate Fellowships

Summer stipends and on-site housing are available for graduate or post-doctoral students proposing original research that uses our resources and facilities and that contributes to the ongoing science program at the station. *Up to 10 summer Graduate Fellowships are available each year.*



Laboratory Research



Shenandoah River Trip



Historic Quarters Building

HOW TO APPLY

Application materials and complete program descriptions may be found on the Blandy website: www.blandy.virginia.edu

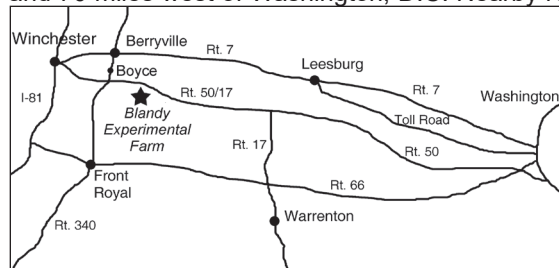
For More Information
Call 540-837-1758 Ext. 292
Email: haynes@virginia.edu



University of Virginia's

BLANDY EXPERIMENTAL FARM

Blandy Experimental Farm is approximately 90 miles north of Charlottesville and 70 miles west of Washington, D.C. Nearby recreational opportunities



include camping in Shenandoah National Park, hiking on the Appalachian Trail, and kayaking on the Shenandoah and Potomac Rivers. For more information, visit our website: www.blandy.virginia.edu

**REU
Application
Deadline
Feb. 15, 2022**